

Toy Story: Build Your Own Toy!

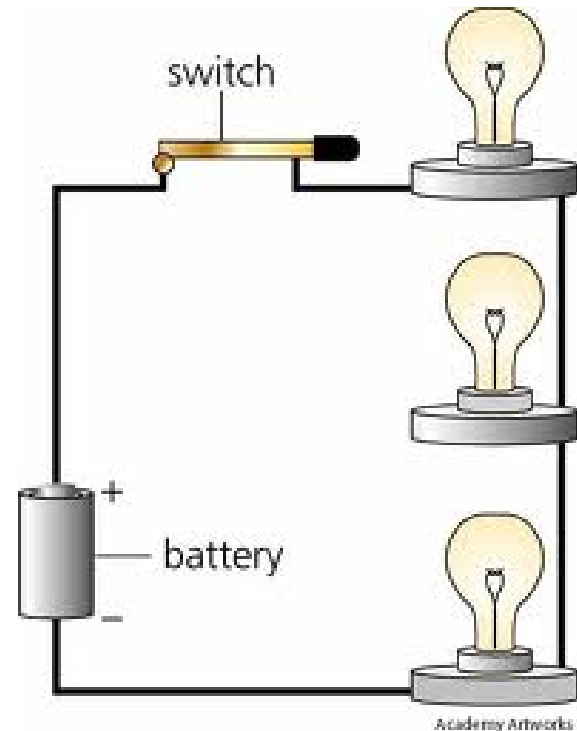


Some Electric Toys



Circuits and Motors

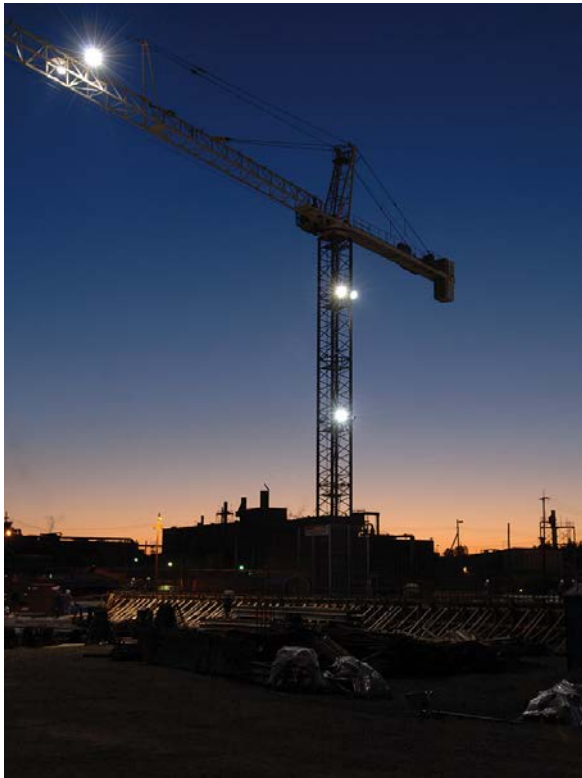
Batteries are used to supply electricity



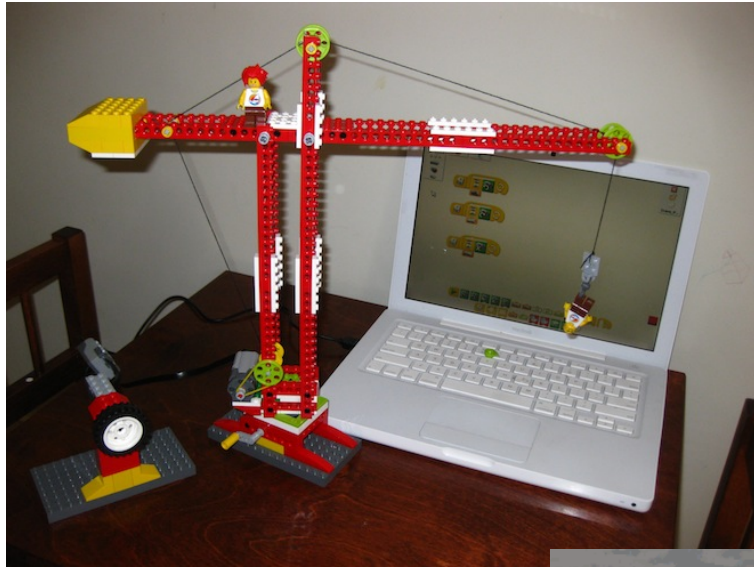
Electricity is used to run a motor

Motors are used for lots of things

From big...



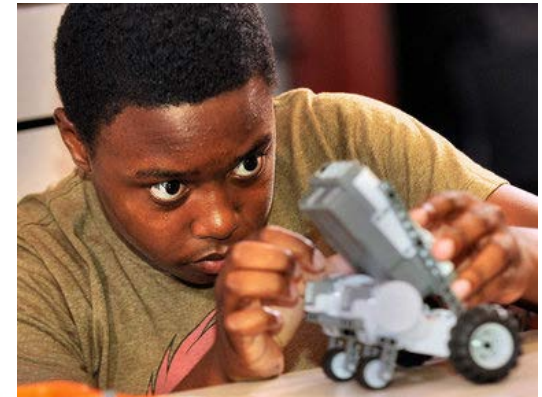
To small...



Toy Engineering



- Engineers design, build, and test toys using motors



Today's Project

- **Goal:** Design and build a new toy
- **Given:** Motor, batteries, wires, popsicle sticks, straws, tape, note cards, gears, axles, wheels
- **Requirements:** Toy must have moving parts and be fun to play with
- **(Optional) Presentation:** Explain why your toy should be manufactured for the children (your clients) This should include how fun and creative your toy is!