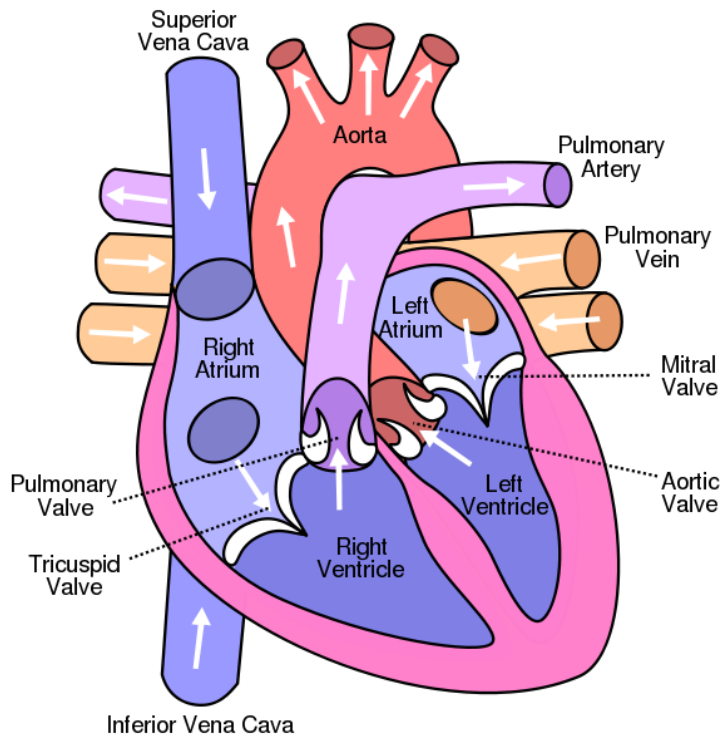


Name:

Date:

Class:

Diagram of the Human Heart



[http://commons.wikimedia.org/wiki/File:Diagram_of_the_human_heart_\(cropped\).svg](http://commons.wikimedia.org/wiki/File:Diagram_of_the_human_heart_(cropped).svg)

Compare the Flow chart that you just made to the diagram that you see here of the human heart showing blood flow pattern. In complete sentences list the similarities and differences between the two diagrams, and list which one you like better and why. Your writing should be at least five sentences.