

Name: _____ Date: _____

Topo Triangulation – 6th Grade Worksheet

Instructions

You and a friend left to go on a hike earlier today. You have been walking for a while, and now you do not know where you are. You have looked around and taken a few bearings of landmarks you see. Following is what you know:

Clues

- A) Your hike started at “East Portal” 4 hours earlier.
 - B) You can hear a railroad somewhere to the north.
 - C) You took a bearing of Mammoth Creek Dam at 100 degrees.
 - D) You took a bearing of Haystack Mountain at 241 degrees.
 - E) You see another small lake at 305 degrees.
- 1) If someone were looking for you from Mammoth Creek Dam, what direction would they have to look?

 - 2) Using your compass edge, draw a line from the Mammoth Creek Dam in the direction you wrote above. Your location is somewhere along that line.

 - 3) If someone were looking for you from Haystack Mountain, what direction would they have to look?

 - 4) Using your compass, draw a line from Haystack Mountain in the direction you wrote above. What is important about the place where the two lines meet?

 - 5) Which lake is Clue E (above) talking about?

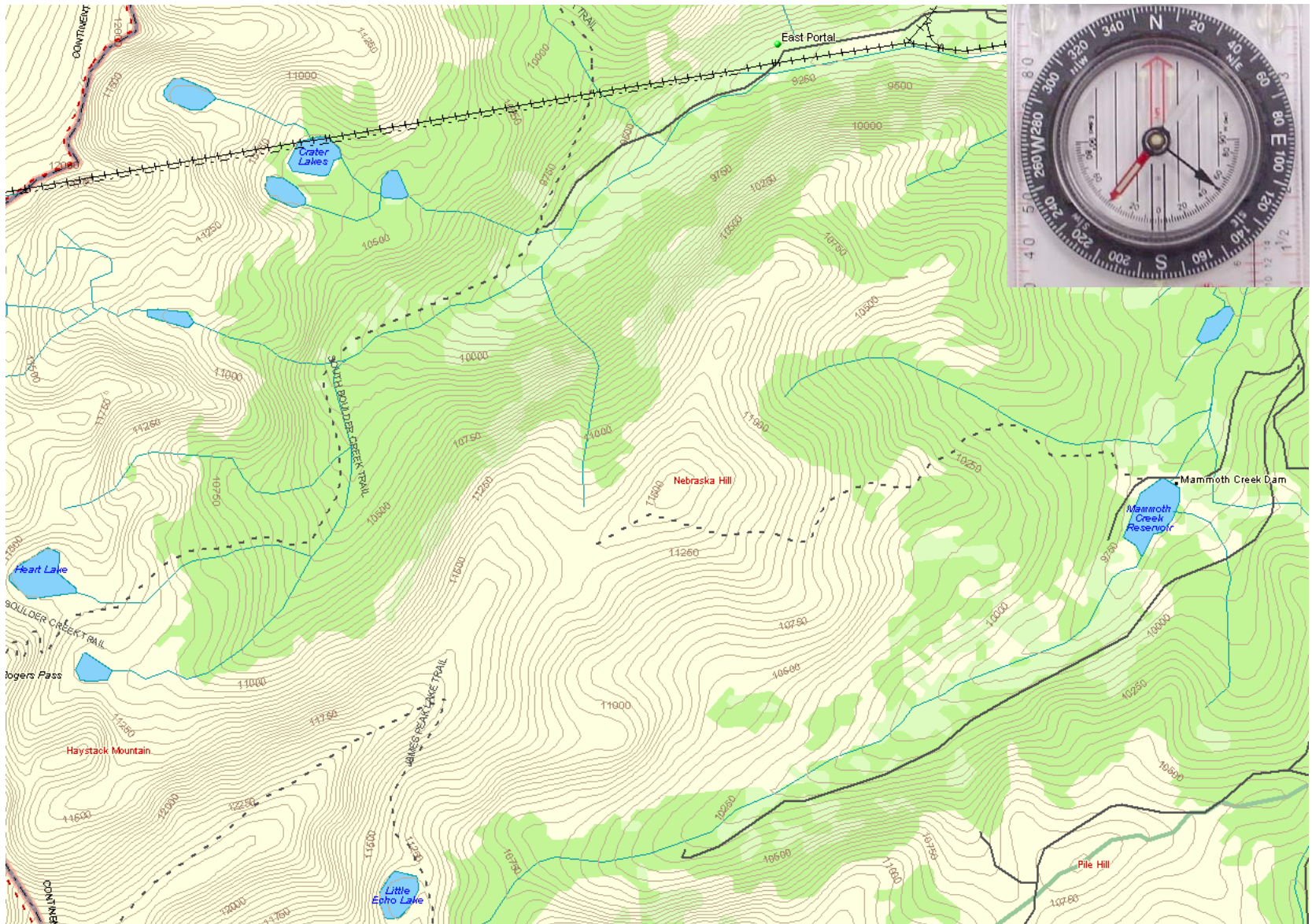


Photo courtesy of DeLorme: © 2002 DeLorme (www.delorme.com) Topo USA ®