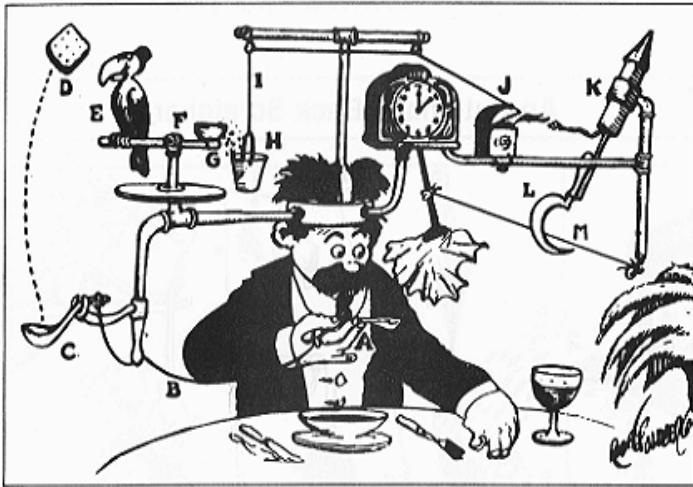




# Rube Goldberg Machine

# What is a Rube Goldberg Machine?

Self-Operating Napkin





## Q&A

- What makes a Rube Goldberg device unique?
- Who can name a simple machine?
  - Bonus: How many types of simple machines exist?

# Simple Machines

Lever

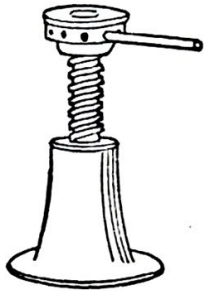
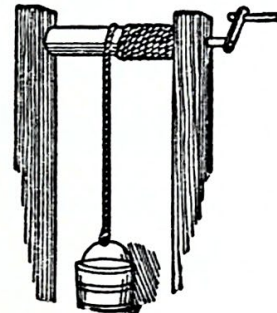
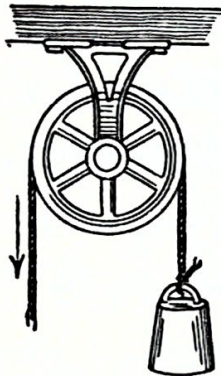
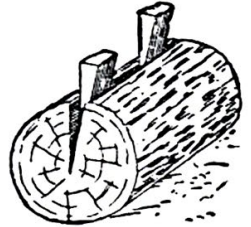
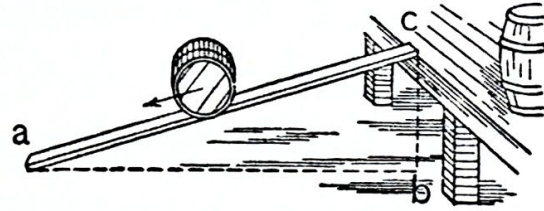
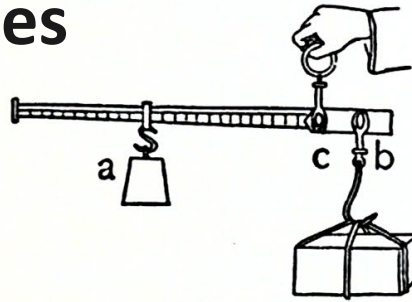
Wheel and axle

Pulley

Inclined plane

Wedge

Screw





# Design Challenge

- Design a Rube Goldberg device that uses at least six simple machines sequentially.
- Try to use most materials: cardboard, tape, hot glue, popsicle sticks, string, marbles, cardboard tubes, drinking straws, plastic soda bottles, and dominoes.
  - Remember, you're not limited to just these materials; be creative!
- Use 3D printed components, if a printer is available.
- Each team member is responsible for at least two stages.
- Record your design in your notebook.