



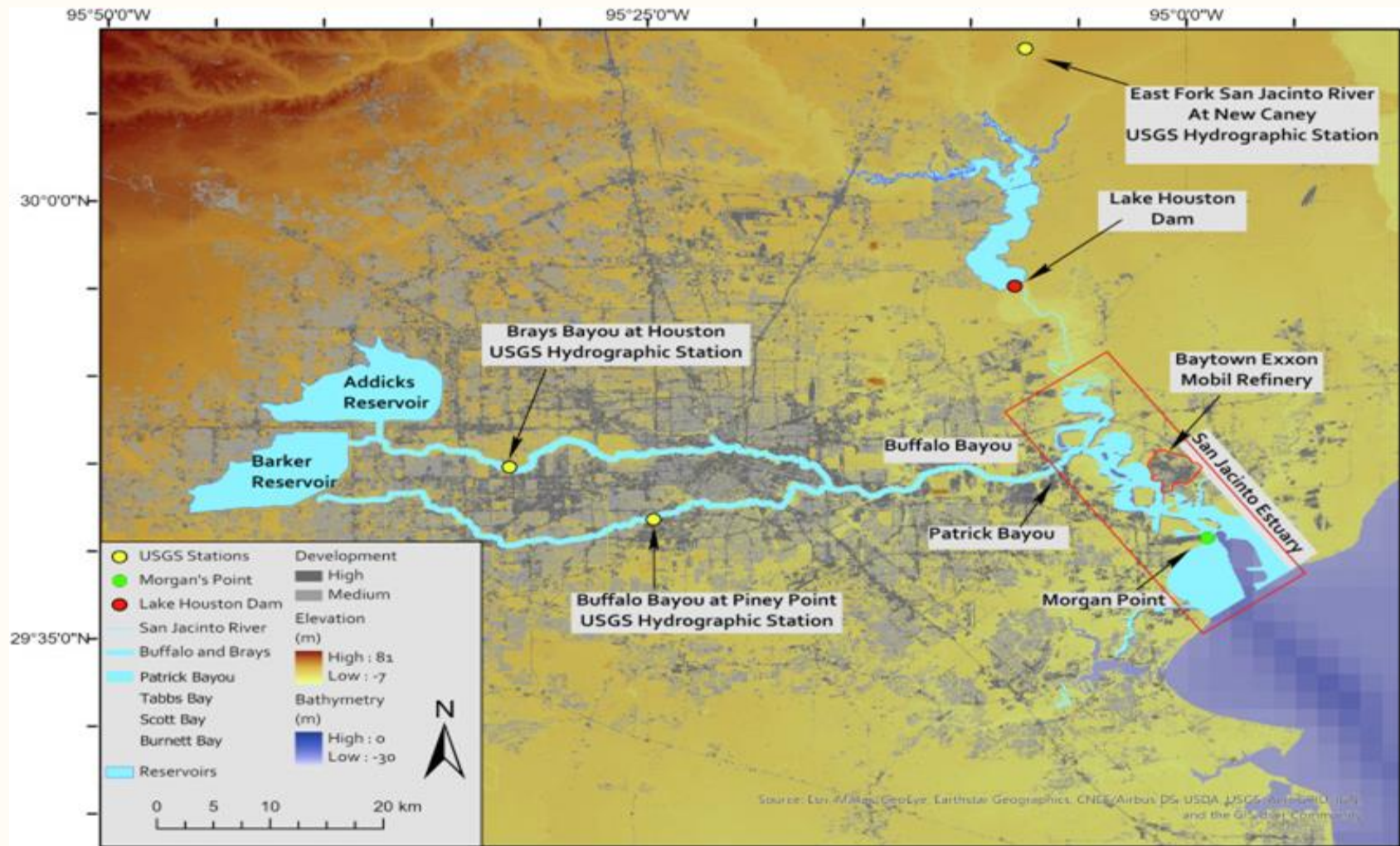
TeachEngineering

Bayou Design Challenge



Subscribe to our newsletter at TeachEngineering.org to stay up-to-date on everything TE!

ncwit.org





Buffalo Bayou before Hurricane Harvey



Buffalo Bayou during Hurricane Harvey



Buffalo Bayou after Hurricane Harvey



Buffalo Bayou

Goal:

Design and build a bayou model that reduces sediment transport in a bayou.

Steps:

1. Plan your design.
2. Predict and measure.
3. Build and test.
4. Analyze results.

Reflection Questions:

1. Why is it important to control sediment movement in bayous and rivers? How might this help the environment and communities?
2. What engineering skills did you use in this challenge?