



Name:

Date:

Class:

Engineering Design Process and Water Filtration Test

- In the water filtration process, the stage that kills pathogens by introducing chlorine into the system is called:
 - Filtration
 - Coagulation
 - Disinfection
 - Sedimentation
- In the water filtration process, the stage during which clumps of particles settle out of the water column by slowing the flow of the water is called:
 - Filtration
 - Coagulation
 - Disinfection
 - Sedimentation
- In the water filtration process, the stage that introduces alum (a material that causes particles to stick together) is called:
 - Filtration
 - Coagulation
 - Disinfection
 - Sedimentation
- In the water filtration process, the stage during which the water passes through layers of sand to remove leftover debris is called:
 - Filtration
 - Coagulation
 - Disinfection
 - Sedimentation
- When following the engineering design process, the different steps can occur in which direction?
 - clockwise 
 - counter-clockwise 
 - in any direction, including shortcuts
 - both clockwise and counter-clockwise
 - I don't know the answer
- Rob and his team have been chosen to build a wind turbine at a local mountain. The turbine must generate electrical energy and withstand the harsh winter environment on the mountain. Rob and his team have done their research on the problem. What would be the next step?
 - Create a prototype of the wind turbine.
 - Develop possible turbine solution(s).
 - Test the wind turbine on the mountain.
 - Redesign a new solution for this turbine.
 - I don't know the answer.
- The engineering design process is _____ to solve a problem.
 - an iterative process
 - a process that creates one prototype
 - a quick process
 - a process with a beginning and an end
 - I don't know the answer

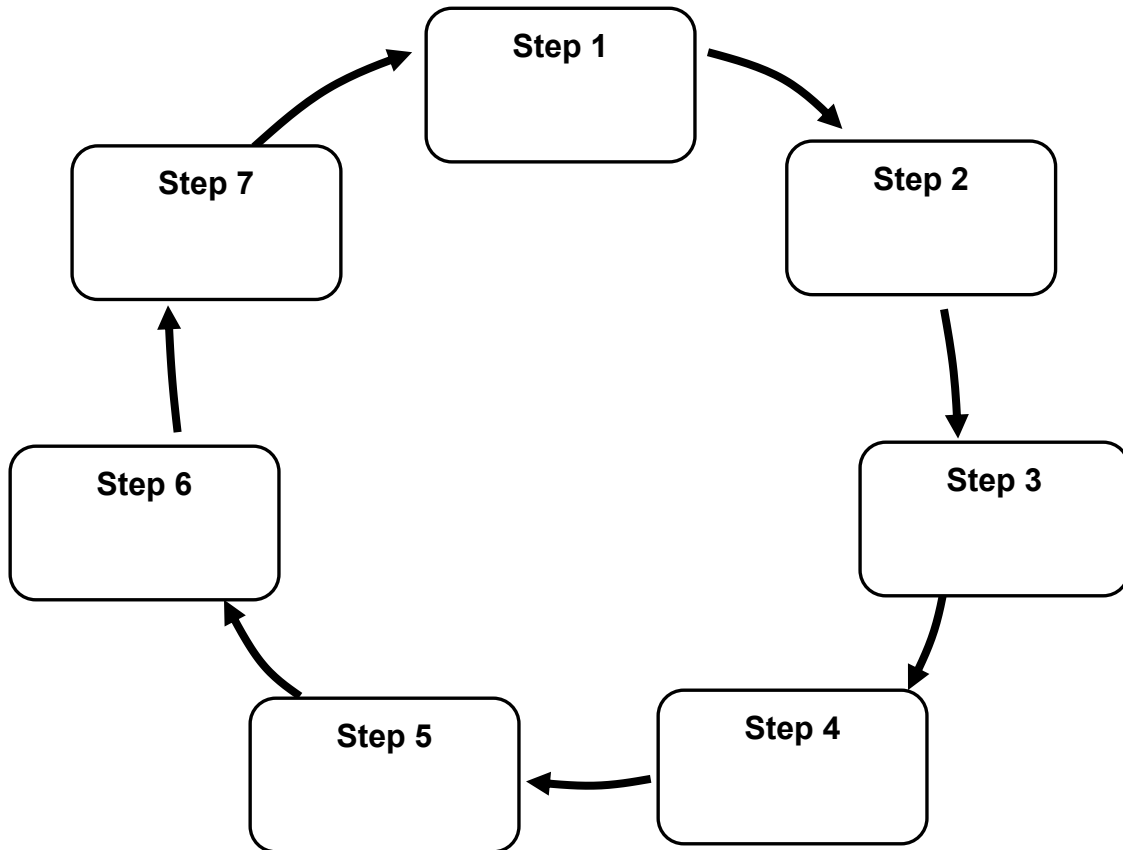
Name:

Date:

Class:

8. Below are the steps of the engineering design process and they are not in the correct order. Indicate the correct order in the circular diagram by filling in the blank boxes with the letter of each step.
- | | |
|---|---|
| A. Test and evaluate the solution. | E. Create a prototype. |
| B. Imagine possible solution(s). | F. Improve and redesign. |
| C. Ask to identify the need or problem. | G. Plan by selecting the best possible solution(s). |
| D. Research the need or problem. | |

If you do not know what to put in the box for a step, leave it blank.



Name:

Date:

Class:

9. John needs to create a boat out of a 20 gram ball of clay. His boat must float and hold 10 marbles. He will follow the steps of the engineering design process to guide him to do this. For each of John's activities listed below, indicate what step of the design process it represents.

- A. Test and evaluate the solution.
- B. Imagine possible solution(s).
- C. Ask to identify the need or problem.
- D. Research the need or problem.
- E. Create a prototype.
- F. Improve and redesign.
- G. Plan by selecting the best possible solution(s).

If you do not know what EDP step to put next to John's activity, leave it blank.

	John makes changes to his design based on testing results and feedback.
	John finds out how boats are made, characteristics of boats and clay, and what makes something buoyant.
	John creates multiple plans for a boat.
	John works with the clay to form it into a shape that can hold 10 marbles and maintain buoyancy.
	John decides, based on his research, what boat design is best to be able to hold 10 marbles and float.
	Using a 20 g ball of clay, John must make a boat that can float and hold 10 marbles.
	John tries to the float the boat with 10 marbles in it. He notes how well it works and any issues that come up.

10. A student group bought a box of ice pops to take to their ball game to sell on a hot day. They know they need a device to keep the ice pops from melting for three hours. They have a \$15 budget. Which step of the engineering design process does this show?

- A. Identify a problem.
- B. Test and evaluate.
- C. Redesign.
- D. Develop possible solutions.
- E. I don't know the answer.

11. Which of the following is part of the testing and evaluation stage of designing a cell phone?

- A. Writing an advertisement for the cell phone.
- B. Defining the specifications for the cell phone.
- C. Finding a new material for the cell phone case.
- D. Trying to see if cell phone is waterproof.
- E. I don't know the answer.